

RavTrack™

**Raveon Technologies
Complete Real-Time Tracking**

Using Raveon's innovative M7 series of UHF transceivers, Raveon offers a family of tracking products to make a complete GPS based tracking system for AVL, animal tracking, security, dispatch, and equipment monitoring systems. Because it uses UHF radio channels there are no recurring costs or monthly fees with this system.



Product Overview

The RavTrack UHF GPS Tracking Transceiver

The heart of Raveon's RavTrack™ AVL technology is the M7 GX Transponder. Raveon's new M7 GX high-speed UHF transceiver has outstanding communication range, very low-power consumption, integrated GPS and TDMA vehicle-tracking protocol. Included in each unit are advanced networking, AES Encryption, tracking, error correction, and diagnostic capabilities. It may be ordered with an IP65 weatherproof enclosure. And because it is the only radio modem built using rugged "single-board" construction, it is extremely tough – and cost effective.



RavTrack™ Basic

The easiest way to make a GPS tracking system is with two or more GX Transponders, and a suitable mobile-plotter such as the Lowrance 540C GPS plotter. With one RV-M7 connected to the GPS plotter, it will show the location of the GPS, as well as the location of all of the other RV-M7 transceivers within radio range.



RavTrack™ PC

RavTrack PC application for displaying, tracking, alarming, and logging the activity of a radio system based upon the RV-M7 transceiver. This easy-to use application graphically shows the location and status of cars, trucks, people, or anything equipped with an RV-M7 transceiver. The displayed map may be any graphic image, bitmap, or .jpg. RavTrack PC supports geo-fencing, logging, Crystal Reports, and various proximity alerts. The SQL database allows the user to customize reports and access real-time data. It operates as either stand-alone system on a single PC, or in a multi-user configuration.



Third-Party Support

Global Mesh Technologies has developed CAMMS™ (Command Anywhere Mobile Mesh Software) to enable a totally secure, scalable mobile mesh (ad hoc) network and provide the necessary tools for Command Anywhere. Incorporating Raveon's RavTrack technology into CAMMS enables Global Mesh to provide an ad hoc, self-forming / self-healing wireless mobile mesh network with real-time AVL.

Raveon Technologies Corporation

2780 La Mirada Drive, Suited C
Vista, CA 92081
Phone: +1-760-727-8004
Fax: +1-760-598-8004

Email: sales@raveontech.com

GPLocator by **Dynamic Survey Solutions** is an application capable of tracking up to 100 vehicles simultaneously in real time. GPLocator allows each vehicle to be configured with regard to its symbol type, color and label. Several serial and network communication protocols are supported, including interfaces for Raveon's M7 series GPS transponders. There are logging and playback capabilities, and a utility that converts the log file into an MDB database and allows the user full query and reporting capabilities. Alerts include tests for proximity, exclusion zone, data age, and vehicle movement.

Global Mapper Software LLC Global Mapper Software LLC designs, develops, and distributes the **Global Mapper** software package. They are committed to bringing powerful GIS software within the reach of everyday users by combining unparalleled ease of use with a vast feature set and an amazingly low price. With the release of v10.01 in late 2008, GlobalMapper is compatible with Raveon's My GX transponders.

DataNET Software by **Datalink Systems, Inc.** has been used by U.S. and Canadian Government Agencies for secure GPS tracking and IP packet data routing. The current version offers unsurpassed adaptability. Unlike ASP (Web Browser) software which ties the customer to a 3rd party server, DataNET is Client/Server based, allowing user to operate their own revenue generating hub or to by larger corporations and Government Agencies who want to operate their own private network. It is Fully integrated with M.S. Mappoint and M.S. Virtual Earth and works with Raveon UHF/VHF radios as well as a host of GPS radios from other vendors, including GSM, SDMA, and satellite services.

The Raveon M7 GX UHF GPS Tracking Transceiver

Raveon's RV-M7 *RavTrack* series of data radio modems are a high-speed FCC compliant data radios designed for Real-Time Vehicle Tracking. The RV-M7 series of radio modems are the most economical UHF radio modem available. It is the fastest radio modem in its class. With its ultra-fast transmitter, position updates may be sent as quickly as 20-per-second. Its advance power management powers-down the radio and/or GPS when not needed, keeping the current consumption to a minimum.



Raveon's new RV-M7 GX high-speed UHF data radio transceiver have outstanding communication range, very low-power consumption, and an integrated GPS. Included in each unit are advanced networking, tracking, error correction, and diagnostic capabilities. The RV-M7 GX is available in three configurations:

- | | |
|--------------------------|---|
| Standard | BNC RF connector, SMA GPS connector, DB9 I/O connector, terminal block for DC power. |
| IP65 Weatherproof | TNC RF connector, SMA GPS connector, Waterproof combination DC power and serial data connector. |
| Personal Locator | Contact Raveon for information about the new Personal Locator version, with built-in battery, and antennas. Available Q1, 2009. |

One unit, 4 different operation modes.

The GX is easily configured to work in a variety of different situations.

- | | |
|-----------------------|--|
| GPS display: | Connect to a GPS (Lowrance, Magellan, Garmin) |
| Radar Display: | Connect the GX to a marine plotter or radar display |
| RavTrack PC: | PC software to view a map, status, log movement, set alerts, and make reports from the data. |

Raveon Technologies Corporation

2780 La Mirada Drive, Suited C
Vista, CA 92081
Phone: +1-760-727-8004
Fax: +1-760-598-8004

Email: sales@raveontech.com

Transponder only:

The GX is in a “sleep” mode most of the time, only waking up to send position and status at pre-programmed intervals.

RavTrack Basic

The Lowrance model 540C is a GPS receiver and plotter manufactured by the Lowrance company. Raveon has designed its RV-M7 series of products to be compatible with the Lowrance 540C plotter. When connected to an RV-M7 and configured, the Lowrance will show its own location on a map, as well as the location of other objects that are within radio range of the Lowrance plotter.



It is the easiest way to make a GPS tracking system is with two or more RV-M7 transceivers. With one RV-M7 connected to the Lowrance plotter, it will show the location of the Lowrance, as well as the location of all of the other RV-M7 transceivers within radio range.

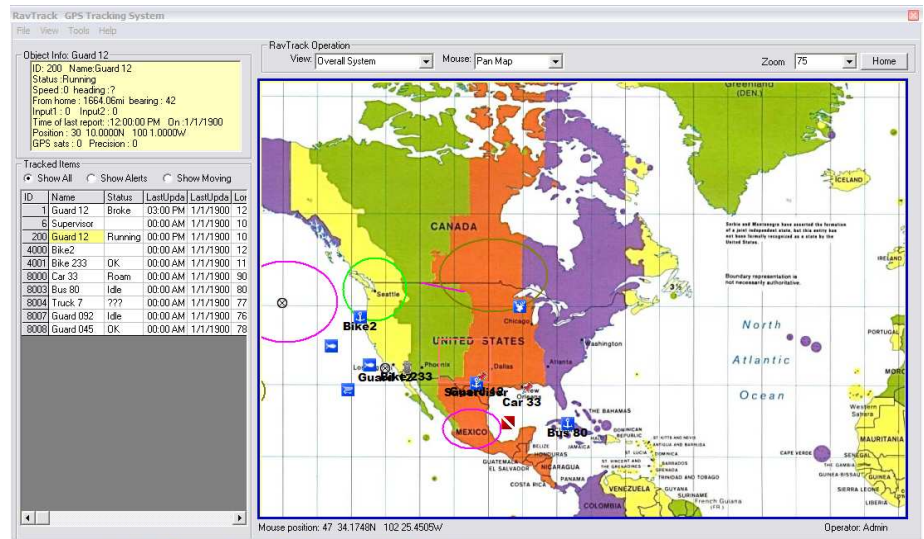
RavTrack™ PC

Raveon's RavTrack PC computer software application displays, tracks, alarms, and logs the activity of a radio system based upon the RV-M7 transceiver.

This easy-to use application graphically shows the location and status of cars, trucks, people, or anything equipped with an RV-M7 transceiver. The displayed map may be any graphic image, bitmap, or .jpg. A simple-to-use calibration utility is provided to calibrate graphic images for use in RavTrack PC.

Features:

- Track up to 9999 objects using the RV-M7 GPS transceiver.
- Save individual movement to log file and track files.
- Crystal Reports viewer included for report generation.
- Create GeoFences and set rules for alarms on each individual tracked object.
- Create movement rules (speed, idle time, proximity...) for each individual object
- All objects and rules are in an MS Access database for easy customization of reports.
- Single PC or multi-user operation
- Simple to make custom maps. Any .gif, .tiff, geo-tiff, or .jpg image may be calibrated and used as a map.
- Rich set of tools for locating objects and measuring distances, headings, and speed.



For More Information

For more information about these or any other Raveon product, see www.ravtrack.com or call in the U.S.A. 1-760-727-8004 or send an email to sales@raveontech.com.

Raveon Technologies Corporation

2780 La Mirada Drive, Suited C
Vista, CA 92081
Phone: +1-760-727-8004
Fax: +1-760-598-8004

Email: sales@raveontech.com